

# Supporting Students in Temporary Housing:



## Using Title I STH Funds in NYC



**NYSTEACHS.org**

The New York State Technical and Educational  
Assistance Center for Homeless Students

**NYC** Public  
Schools

Presented by: NYS TEACHS &  
NYC Office of Students in Temporary Housing  
Thursday, November 16, 2023

9:30am-11:00am



**MEASUREMENT**  
INCORPORATED

# Webinar Format



- Today's session will be recorded.



- Your microphone will be automatically muted.



- Your camera will be automatically disabled.



- The in-webinar chat will only allow you to communicate with the panelists and the host.



For questions, please email Rita Danis at [RDanis@measinc.com](mailto:RDanis@measinc.com).



**NYSTEACHS.org**

The New York State Technical and Educational  
Assistance Center for Homeless Students



**MEASUREMENT**  
INCORPORATED

# Housekeeping



- Poll questions will be launched periodically throughout the session. Additional questions will require your response in the chat.
- We won't be able to answer questions about specific situations in the chat, but we welcome you to call the Help Line to discuss these issues at 800-388-2014.
- The Help Line is open 24 hours a day. Specialists are available from 9:00am–5:00pm. If you leave a message, you will be called back by the next business day.
- Following today's webinar, the recorded session, attachments, and Q&As will be posted/accessible.



**NYSTEACHS.org**

The New York State Technical and Educational  
Assistance Center for Homeless Students



**MEASUREMENT**  
INCORPORATED

# Who is in the Room?

## Are you a...

- School-based STH Liaison (1<sup>st</sup> Year)
- School-based STH Liaison (2-4 years)
- School-based STH Liaison (5+ years)
- Transportation Coordinator
- Other School/District Staff



## Which borough are you from?

- Bronx
- Brooklyn
- Manhattan
- Queens
- Staten Island



**NYSTEACHS.org**

The New York State Technical and Educational  
Assistance Center for Homeless Students



**MEASUREMENT**  
INCORPORATED

# Session Outcomes



By the end of today's webinar, participants will be able to:

- Explain the general principles regarding how to use Title I STH Funds.
- Identify allowable and unallowable uses of Title I funds.
- Assess the needs of your STH student population to align with the spending of Title I funds.
- Learn about the allocation of Title I STH funds allotted to each school.



**NYSTEACHS.org**

The New York State Technical and Educational  
Assistance Center for Homeless Students



**MEASUREMENT**  
INCORPORATED



# Today's Agenda



Welcome! Who is in the Room?



What is Title I STH?



Title I STH Fund Allocation



Uses of Title I STH Funds



Student Needs Assessments



Check for Understanding, Summary,  
Survey and Resources



**NYSTEACHS.org**

The New York State Technical and Educational  
Assistance Center for Homeless Students



**MEASUREMENT**  
INCORPORATED

# Share Your Experience



In what ways has your school used Title I funds to support students living in temporary housing?

Or in what ways do you feel that your school should use Title I STH Funds?

Please  
respond in the  
chat. 😊



**NYSTEACHS.org**

The New York State Technical and Educational  
Assistance Center for Homeless Students



**MEASUREMENT**  
INCORPORATED



# What is Title I STH?

---





# What is Title I, Part A?

The purpose of Title I, Part A of the Elementary and Secondary Education Act (ESEA; 20 U.S.C. § 6301 et seq.) is to provide all children with a fair, equitable, and high-quality education, and to close educational achievement gaps.

Title I, Part A is designed to meet the educational needs of low-achieving children in schools with the highest levels of poverty by **aligning high-quality assessments, systems of accountability, teacher preparation, curriculum, and instructional materials with challenging State academic standards.**



NYSTEACHS.org

The New York State Technical and Educational  
Assistance Center for Homeless Students



MEASUREMENT  
INCORPORATED

# Types of Title I, Part A Programs

Title I, Part A funds two types of school programs:

- **STH Schoolwide programs:** These programs serve all students within the school and seek to upgrade the school's entire educational program to ensure that all students, particularly those who are low achieving, attain high levels of academic proficiency.
- **Targeted assistance programs:** These programs target assistance to students identified as most at risk of not meeting state academic standards.



# Title I, Part A & McKinney Vento Act

The McKinney Vento Act requires all school districts to set aside a portion of their Title I, Part A funds specifically for students in temporary housing.

This is known as Title I, Part A Set-Asides.



# Eligibility for Title I, Part A Support

Students experiencing homelessness are automatically eligible for Title 1, Part A supports.

Even if:

- A student attends a non-Title I school (in a school receiving Title I funds).
- A student doesn't meet the academic standards required of other children for Title I eligibility.
- A student attends a charter school.



**NYSTEACHS.org**

The New York State Technical and Educational  
Assistance Center for Homeless Students



**MEASUREMENT**  
INCORPORATED

# Quick Poll #1 Eligibility Once Permanently Housed

If a child experiencing homelessness becomes permanently housed during a school year, are they eligible to receive supports through STH Title I funds minimally for the remainder of the year?

- A. Yes
- B. No
- C. Not sure



**NYSTEACHS.org**

The New York State Technical and Educational  
Assistance Center for Homeless Students



**MEASUREMENT**  
INCORPORATED





# Title I STH Funds Allocation

---



**NYSTEACHS.org**

The New York State Technical and Educational  
Assistance Center for Homeless Students



**MEASUREMENT**  
INCORPORATED

# Title I, Part A in NYC

As of SY22, the Title I, Part A set-aside for Title I schools in NYC is now additive to a school's Title I SWP or TA allocation.

This funding is known as **Title I STH funds**.



# What are Title I STH Funds?

In accordance with the federal McKinney-Vento Homeless Assistance Act and Chancellor's Regulation A-780, schools must identify, serve, and report on students residing in temporary housing (STH). In addition, ESSA requires all STH students to be Title I eligible, regardless of the school they attend.

The funds allocated for these pupils should be used to assist STH children in meeting the State's challenging academic content and academic achievement standards as well as assisting them when they have urgent needs. Since the number of STH children can change regularly, schools must carefully track this number to determine whether there has been an increase in need (SAM #11, 2024).



**NYSTEACHS.org**

The New York State Technical and Educational  
Assistance Center for Homeless Students



**MEASUREMENT**  
INCORPORATED

# Title I STH Allocations

Title I STH funding allocations are based on the **total number of students that the school identified** as homeless as of the audited register date (usually 10/31) of the previous school year and **the borough's Title I per capita amount**.

For example, the formula for SY2023-24 looks like this:

$$\begin{array}{l} \# \text{ of STH on audited} \\ \text{register date of} \\ \text{previous school} \\ \text{year (12/31/2022*)} \end{array} \times \text{Borough Title I Per Capita} = \text{Total Title I STH} \\ \text{Funding for SY23-24}$$

Source: [FY24 School Allocation Memo No. 11](#)

# Title I STH Per Capita Allotments



- ✓ **SY 2024 launches a new per capita allotment.**
  - ✓ Queens- \$705.11
  - ✓ Manhattan-\$1,237.11
  - ✓ Brooklyn-1,237.14
  - ✓ Staten Island-\$1306.40
  - ✓ Bronx- \$1,431.45
  
- ✓ **Citywide Grand Total of STH Title 1 Funds:**
  - Title 1 SWP STH-74,018,220
  - Title 1 TA STH-87,265
  - Title 1 STH for Non-Title 1- 7,582,572
  - High Need Support for Title 1 STH- 4,388,304
  - **Citywide Total- 86,076,361**





# Uses of Title I STH Funds

---

Guiding Principles  
Allowable Expenses  
Unallowable Expenses



**NYSTEACHS.org**

The New York State Technical and Educational  
Assistance Center for Homeless Students



**MEASUREMENT**  
INCORPORATED

# Title I STH Funds– Guiding Principles

## Principle # 1

Services must be reasonable and necessary to assist students experiencing homelessness to take advantage of educational opportunities.

## Principle # 2

Funds must be used only as a last resort when funds and/or services are not available from other public or private sources.

## Principle # 3

Services derived from Title 1 STH funds can only be used to support STH students.



**NYSTEACHS.org**

The New York State Technical and Educational  
Assistance Center for Homeless Students



**MEASUREMENT**  
INCORPORATED

# Allowable Expenditures Under Title I STH Funds

As stated in the [Title I SAM No. 11](#), Title I STH funds should be used specifically to help students in temporary housing:

- Meet the State's **challenging academic content and achievement standards**;
- as well as
- With **urgent needs**.

## Students in Temporary Housing (STH)

In accordance with the federal McKinney-Vento Homeless Assistance Act and Chancellor's Regulation A-780, schools must identify, serve, and report on students residing in temporary housing (STH). In addition, ESSA requires all STH students to be Title I eligible, regardless of the school they attend.

In FY 2022, both Title I and non-Title I schools will receive one full Title I, per capita allocation for STH students. The Title I STH Set-Aside for Title I schools is now additive to a school's Title I SWP or TA allocation. Schools will now receive additional funding to support STH-related services for each Title I student. As there is not additional Title I funding available, per capitas have slightly decreased as a result

The funds allocated for these pupils should be used to assist STH children in meeting the State's **challenging academic content and academic achievement standards** as well as assisting them when they have **urgent needs**. Since the number of STH children can change regularly, schools must carefully track this number to determine whether there has been an increase in need.

Title I STH funds will be allocated in a distinct allocation category. In all cases, schools must select a program description in Galaxy to identify funds that are being spent for STH students. Program descriptions have been updated to the following list for use in FY 2022.



NYSTEACHS.org

The New York State Technical and Educational Assistance Center for Homeless Students



MEASUREMENT  
INCORPORATED

# Allowable Expenditures Under Title I, STH Funds

In practice, this all means that Title I STH funds are typically spent in two ways:

1. To purchase **commodities** (*tangible items, non-personnel*) for students in temporary housing.
2. To provide **services** (*programs, personnel*) to students in temporary housing.

The next several slides will provide **detailed examples of allowable uses** within each of these two categories.



NYSTEACHS.org

The New York State Technical and Educational  
Assistance Center for Homeless Students



MEASUREMENT  
INCORPORATED

# STH Funds – Galaxy Codes for Expenditures

## Commodities:

In Galaxy and FAMIS (the DOE's purchasing platform), the term "commodities" is used for **allowable items** that a school can provide to students in temporary housing. These items should **support a student in achieving academic and social-emotional success in school.**

## Galaxy descriptions for commonly needed commodities are as follows:

- STH coats, emergency clothing
- STH emergency / weekend food
- STH school uniforms
- STH hygiene kit / personal care items
- STH school supplies
- STH technology equipment and peripheral
- STH school day field trip costs
- STH parent engagement events





# Allowable Expenditures Under Title I, STH Funds

Examples of **COMMODITIES** a school can provide:

Health & Hygiene	School Support	Clothing	Food	Recreation
Hygiene supplies <ul style="list-style-type: none"> <li>• Toothbrush</li> <li>• Deodorant</li> <li>• Soap</li> <li>• Feminine hygiene products</li> </ul>	School supplies: <ul style="list-style-type: none"> <li>• Pencils/pens</li> <li>• Notebooks</li> <li>• Backpacks</li> </ul>	Seasonal clothing: <ul style="list-style-type: none"> <li>• Coats/Jackets</li> <li>• Hats, gloves, boots</li> </ul>	Stock a “Food Pantry” or cabinet in the school where students in temporary housing can grab a snack	Equipment purchases or rentals and uniforms for: <ul style="list-style-type: none"> <li>• Arts</li> <li>• Music</li> <li>• Sports</li> </ul>
Sanitation/cleaning supplies, including laundry supplies	Technology <ul style="list-style-type: none"> <li>• Devices</li> <li>• Hotspots</li> <li>• Headphones</li> <li>• Translation devices</li> </ul>	General clothing: <ul style="list-style-type: none"> <li>• Sweatshirts/pants</li> <li>• Socks/underwear</li> <li>• Shoes</li> </ul>	Weekend/holiday food bags	Mindfulness/SEL kits, Educational games, or activity books for home
Eye-glasses and/or other needed medical devices	Incentives for good attendance, grades, behavior, etc.	Uniforms, including graduation cap & gowns	Pizza parties (or other food) as attendance incentive or family engagement strategy	Field/Class trip fees
First aid kits	School and/or graduation fees including exam fees (SAT, ACT, GED)	School-branded apparel	Grab-and-go snack bags for afterschool	



# Allowable Expenditures Under Title I STH Funds

## Services:

In Galaxy and FAMIS (the DOE's purchasing platform), the term "services" is used for **allowable programs, activities, and/or services** that a school can provide to students in temporary housing.

Galaxy descriptions for commonly needed **services** are as follows:

- STH school day academic supports
- STH after school enrichment programs
- STH mental health emergency intervention services
- STH after school student program fees or tutoring
- STH attendance improvement student supports
- STH parent engagement events
- STH medical / dental / vision services (*Note: This could also be a "commodity" such as eye-glasses*)
- STH emergency transportation costs (*Note: This could also be a "commodity" such as MetroCards*)



NYSTEACHS.org

The New York State Technical and Educational  
Assistance Center for Homeless Students



MEASUREMENT  
INCORPORATED

# Allowable Expenditures Under Title I, STH Funds

Examples of **SERVICES** a school can provide:

Academic Tutoring	Enrichment Activities	Health & Well-being	Family Engagement
<b>Per session costs</b> for school staff to provide before- or after- school tutoring	<b>Per session costs</b> for school staff to provide before- or after- school mentoring	<b>Contract</b> with outside providers (e.g., non-profit or community-based organization) to provide counseling and mental health services. This can include family counseling.	<b>Transportation</b> costs for parent/teacher conferences or other school events
<b>Contract</b> with a CBO or non-profit to provide school-day or afterschool tutoring	<b>Per session costs</b> for school staff to provide enrichment activities such as sports, art, music, chess club, language club, etc.	<b>Hiring</b> staff (e.g., Social Worker) to work exclusively with students in temporary housing	<b>Costs</b> for providing classes for families of students in temporary housing (e.g. English language, resume writing classes)
<b>Transportation</b> to/from an after-school program or activity for students in temporary housing only	<b>Transportation</b> to/from an after-school program or activity for students in temporary housing only	<b>Contract or provider fees</b> for needed medical, dental, or vision services for students in temporary housing only	<b>Per session</b> costs for school staff to do attendance outreach to families in temporary housing



**NYSTEACHS.org**

The New York State Technical and Educational Assistance Center for Homeless Students



**MEASUREMENT**  
INCORPORATED

# Unallowable Expenditures Under Title I STH Funds

Examples of **COMMODITIES** a school **cannot** provide:

Health & Hygiene	Housing Support	Clothing	Food	Recreation / School
<p>Medical equipment available through insurance</p> <p><b>Gift cards</b> for hygiene products</p>	<p>Rent payments</p> <p>Utilities payments</p>	<p><b>Gift cards</b> for a clothing store</p> <ul style="list-style-type: none"> <li>• Prom Tuxedos or gowns</li> <li>• Class rings or t-shirts</li> </ul>	<p><b>Gift Cards</b> for food, a grocery store</p>	<p><b>Gift cards</b> for events, stores to purchase materials</p> <p><b>School pictures</b></p> <p><b>Graduation rings</b></p>

Examples of **SERVICES** a school **cannot** provide:

Staffing	Academic Tutoring	Enrichment Activities	Health & Well-being
<p><b>Funding staff positions</b> that are not working with STH</p> <p><b>Fully funding existing staff positions</b></p>	<p><b>Per session costs</b> for school staff to provide before- or after- school tutoring for non-STH students</p>	<p><b>Per session costs</b> for school staff to provide before- or after- school mentoring for non-STH</p> <p><b>Graduation trips</b></p>	<p><b>Mandated counseling</b> as listed on a student's IEP</p> <p><b>Medical services or counseling</b> available through insurance</p>



# Funding Staff with Title I STH Funds

Not sure if spending Title I STH Funds on a staff position is allowable? Use the information below to help you!

**Any use of Title I STH funds for staff should supplement, not supplant, existing funding sources.**

## Allowable

**Pay per-session** for the hours they work in supporting STH beyond their regular job duties\*

**Pay the full salary of a position solely for supporting STH** (e.g. a *Community Coordinator hired to support STH*)

## Unallowable

Funding a position **when other funds are available**. Any use of Title I STH funds for staff should supplement, not supplant, existing funding sources.

**Funding any staffing costs for mandated positions or services**. Any use of Title I STH funds for staff must align with dedicated support provided to students in temporary housing. (e.g. principal full salary or per-session, assistant principal full salary, teacher salary or per-session for teaching non-STH students, per-session for mandated counseling services)



**NYSTEACHS.org**

The New York State Technical and Educational  
Assistance Center for Homeless Students



**MEASUREMENT**  
INCORPORATED



# Quick Poll # 2 Eligibility Attending a Non-Title I School

If a student experiencing homelessness attends a school that does not receive STH Title 1 Funds, can the student still receive services?

- A. Yes
- B. No
- C. Not sure



NYSTEACHS.org

The New York State Technical and Educational  
Assistance Center for Homeless Students



MEASUREMENT  
INCORPORATED

# Quick Poll #3 Allowable Expenditures Under Title I STH?



A family with four children lost everything they owned in a house fire. Which of the following items can STH Title I funds be used to purchase?

- A. School uniforms and backpacks
- B. Eyeglasses
- C. New sneakers
- D. All of the above



NYSTEACHS.org

The New York State Technical and Educational  
Assistance Center for Homeless Students



MEASUREMENT  
INCORPORATED



# Student Needs Assessment

---



**NYSTEACHS.org**

The New York State Technical and Educational  
Assistance Center for Homeless Students



**MEASUREMENT**  
INCORPORATED

# Data Sources to Help Determine Need

Number of Students Identified as Homeless in your school

STH Attendance Data

Academic Data

Unaccompanied Youth, English Language Learners, Students With Disabilities, Migrant Students



**NYSTEACHS.org**

The New York State Technical and Educational Assistance Center for Homeless Students



**MEASUREMENT**  
INCORPORATED

# Data Sources to Help Determine Need



**What do my students in temporary housing need to be successful in our school?** Answering this question shouldn't be a guessing game. **Look at your data to get started!**

Type	Quantitative Data	Qualitative Data
<b>Where</b>	Reports pulled from Insight, ATS (e.g. <i>RATH report</i> ) or student management systems such as the New Visions dashboard.	Responses from electronic or paper surveys given to teachers, parents, students, and/or others. Anecdotal information from conversations or observations.
<b>What</b>	<ul style="list-style-type: none"> <li>• Age/grade of students in temporary housing</li> <li>• Type of temporary housing (e.g. <i>shelter, doubled-up, unsheltered</i>)</li> <li>• Location of shelter(s) and/or other temporary residence(s)</li> <li>• Attendance and chronic absence rates</li> <li>• Current math/reading scores</li> <li>• Multilingual learner status</li> <li>• Students with IEPs</li> </ul>	<p><b>Regarding students in temporary housing specifically...</b></p> <ul style="list-style-type: none"> <li>• What school supplies are they typically missing (e.g., <i>headphones, pencils, notebooks, etc.</i>)?</li> <li>• What supplies do they need to complete homework (e.g., <i>computer/tablet, hotspot, headphones, notebooks, etc.</i>)?</li> <li>• Are you regularly providing anything from your classroom or out-of-pocket (e.g. <i>snacks, supplies, weather appropriate clothing</i>)?</li> <li>• What are the common reasons for absences that you hear from students and/or their parents/guardians?</li> <li>• Are they connected with any extracurricular activities in school or after-school?</li> <li>• Have you heard any comments about food, housing, health needs, or employment from parents/guardians?</li> </ul>




# Data Sources: Parent/Guardian Survey

## Parent/Guardian Survey Sample

### Title I STH Needs Survey

- Available in all 9 DOE languages
- Includes questions about
  - Housing status
  - Academic needs
  - Basic needs (clothing, food)



Department of Education  
David Banks  
Chancellor

Congratulations!

According to the McKinney-Vento Law, your child is entitled to additional support designed to "...meet the State's challenging academic content and academic achievement, as well as support for urgent needs." Completing this survey helps your school to decide ways we can help to support your child throughout the entire school year.

Student Name: \_\_\_\_\_

Student ID #: \_\_\_\_\_

Parent/Guardian Name: \_\_\_\_\_ Parent/Guardian #: \_\_\_\_\_

Home Address: \_\_\_\_\_

Which of these housing statuses best describes your current living situation?

• Hotel \_\_\_\_\_ Shelter \_\_\_\_\_ Doubled-Up \_\_\_\_\_ Permanently Housed \_\_\_\_\_ Other \_\_\_\_\_

This section in the survey helps the school to identify additional goods or services needed by your child (student) in order for student to perform at his best level in school. Please place a check in the correct box below.

Goods/Services	Yes	No	Comments/Explanations
Uniforms/School Supplies			
After School Activities			
After School Tutoring			
Mentoring			
Academic Help During School			
Parent Activities			
Field Trip Costs			
Coats/Clothes/Food			

Please add any items below not covered above.

\_\_\_\_\_

\_\_\_\_\_

Please contact \_\_\_\_\_ at the school if you have additional questions.

Thank You



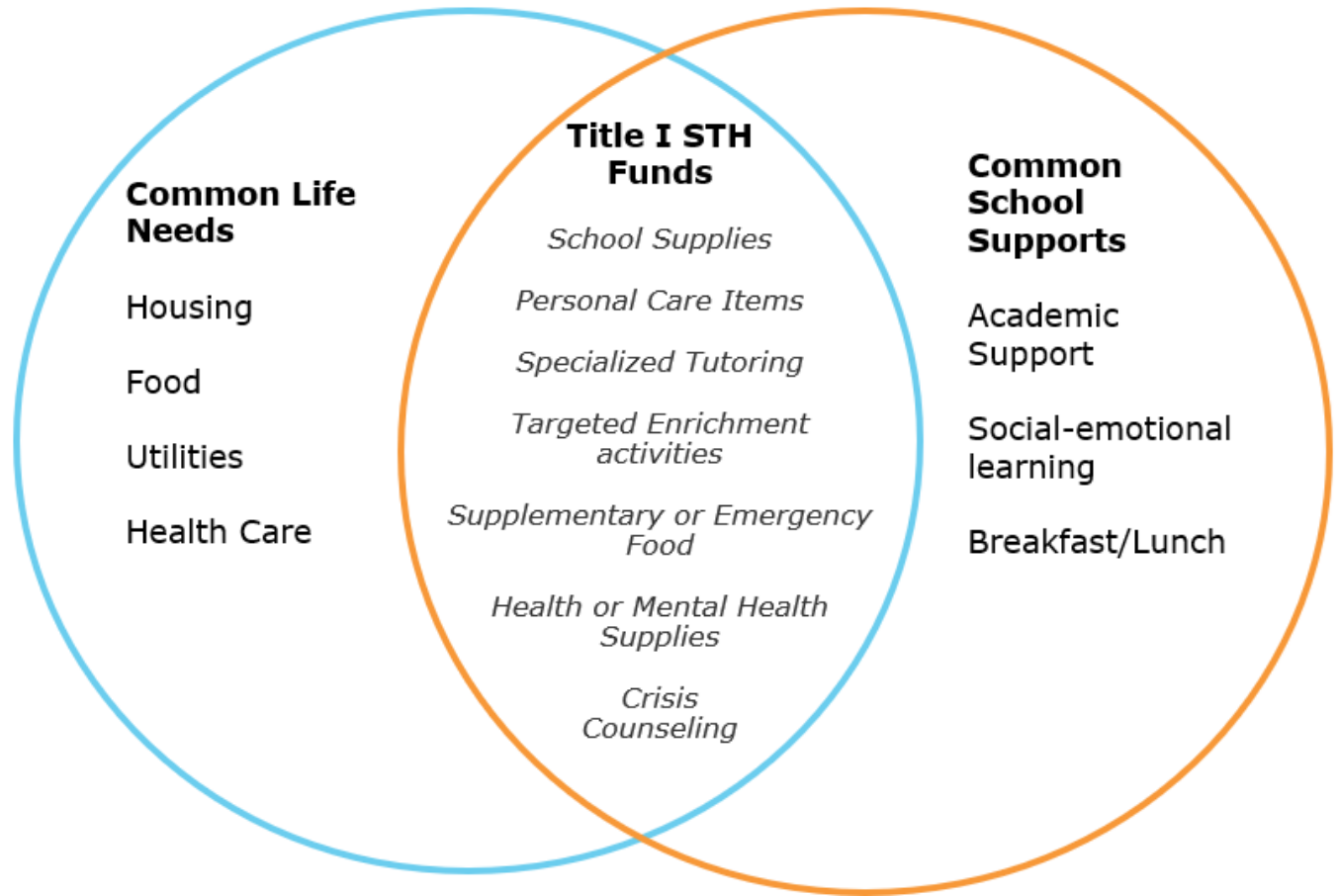
# Using the Student Needs Data

? Which of those needs are we able to realistically and effectively meet with Title I STH funds?

When planning how to best use your school's Title I STH funds, keep in mind the US DOE's guiding principles.

## Is the service or support...

1. Reasonable and necessary to the student's education; and
2. Not reasonably available from another public or private source?





# Using the Student Needs Data

? Which of those needs are we able to realistically and effectively meet with Title I STH funds?

**EXAMPLE 1:** Based on a family survey, you learned that many students still need better access to food.

It would be easiest to hand out grocery store gift-cards, but that is not allowable. Instead, consider what you CAN do to support a family.

**For example:**

- **Stock a “food pantry”** at the school with quick snacks or small items to take home (*Remember: Title I STH funds can only be used to support students in temporary housing. If you would like to have a school-wide food pantry, include other funding sources, not just Title I STH funds*).
- Host a **school-break or holiday “grocery party”** where families can collect food items before school closures
- Provide **fresh produce and cooked food delivery service** from a DOE approved vendor
- Provide **pre-packed weekend food backpacks** and/or holiday baskets
- Provide information about how families can apply for **SNAP (food stamps)** online using Access HRA

**Key Considerations:** When deciding what types of food to purchase and distribute, be sensitive to cultural, religious, personal preferences or living situations (*i.e. ask/survey families, don’t just guess*). For example:

- **Do they have access to cooking facilities or a place to store food?** Some shelter placements don’t have any and parents don’t have access to a standard fridge to store food.
- Do you have young children in your school who **might not be able to carry a backpack full of heavy food items?**
- What are **the cultural, religious, and/or personal food preferences** of the students/families in your school?



NYSTEACHS.org

The New York State Technical and Educational  
Assistance Center for Homeless Students



MEASUREMENT  
INCORPORATED

# Using the Student Needs Data

? Which of those needs are we able to realistically and effectively meet with Title I STH funds?

**EXAMPLE 2:** Based on data pulled from ATS (as well as Insight), you see that **50% of your students in temporary housing are also multilingual learners.**

After ensuring that those students are receiving all mandated services, consider what gaps still exist and how they may be bridged using Title I STH funds.

**For example:**

- **Translation devices** and/or other assistive language technology for home/family use
- **Additional language tutoring** during before- or after-school (per-session payments)
- **Host family events in non-English** that serve to welcome families into the school community who may otherwise feel nervous or hesitant (e.g. a *Welcome to Kindergarten night hosted in Spanish*)
- **Hiring a multilingual social worker** to work exclusively with STH and their families

**Key Considerations:** Again, when deciding the details of support you will offer, be sure to consider any limitations and/or realities that families may be facing. For example:

- What level of comfort do the students and/or parents have with technology? If you provide translation devices or software, do you need to include training sessions?
- Before scheduling events, think about potential scheduling issues. If you host an evening or weekend event, make it “whole family friendly.” Families in temporary housing often face significant barriers accessing childcare and transportation so offering MetroCards/transportation and/or childcare many increase participation.



NYSTEACHS.org

The New York State Technical and Educational  
Assistance Center for Homeless Students



MEASUREMENT  
INCORPORATED

# Key Stakeholders

In your planning conversations, **make sure that the following stakeholders are included** and/or consulted.

## SCHOOL-BASED:

- **Principal**
- **School-Based STH Liaison (SBL)**
  - Bridging the Gap SW
  - STH Community Coordinator
  - School Counselor/SW
  - Parent Coordinator
- School Leadership Team
- Teachers
- Students/Families
- Purchasing/Business Secretary

## DOE CENTRAL-BASED:

- **STH Regional Manager**
- District Procurement Specialist
- District Budget Director

## SHELTER-BASED:

- NYCPS Family Assistant or Community Coordinator
- Students/Families

At **minimum**, a school's **SBL should lead the planning process** and - if possible - **consult with the STH Regional Manager** for guidance on an initial plan. This plan then needs to be approved/updated by the **school's Principal**.



NYSTEACHS.org

The New York State Technical and Educational  
Assistance Center for Homeless Students



MEASUREMENT  
INCORPORATED

# Planning & Spending Title I STH Funds

1. Assess the needs of the STH population.
2. Schedule planning conversation with key stakeholders
3. Properly schedule funds in Galaxy using STH program descriptions.
  - a. Ensure alignment with Consolidated Plan.
4. Continue to assess needs to spend in real-time.



NYSTEACHS.org

The New York State Technical and Educational  
Assistance Center for Homeless Students



MEASUREMENT  
INCORPORATED



# Check for Understanding

---



**NYSTEACHS.org**

The New York State Technical and Educational  
Assistance Center for Homeless Students



**MEASUREMENT**  
INCORPORATED

# Check for Understanding #1

Can schools use their Title 1 STH funds to pay for emergency transportation costs?

- A. Yes
- B. No
- C. Not sure



**NYSTEACHS.org**

The New York State Technical and Educational  
Assistance Center for Homeless Students



**MEASUREMENT**  
INCORPORATED

# Check for Understanding #2



Sarah is an unaccompanied youth living in a shelter. She has been working very hard to graduate high school. She would like to attend her senior prom but doesn't have resources to pay to attend. Can schools use their Title I, STH funds to pay for a prom ticket for a student living in a shelter?

- A. Yes
- B. No
- C. Not sure



**NYSTEACHS.org**

The New York State Technical and Educational  
Assistance Center for Homeless Students



**MEASUREMENT**  
INCORPORATED



# Check for Understanding #3



Which of the following is **NOT** an allowable expense using Title I STH funds?

- A. A family's utility bill
- B. After school program
- C. Senior class educational trip
- D. Not sure



# Check for Understanding #4

A mother living in temporary housing has enrolled her four children in school but is having a challenge coordinating transportation with her work schedule. She must be at work by 7:00am. Her middle schoolers can get to school but she has children in the 1<sup>st</sup> and 2<sup>nd</sup> grade who need early care before the school day begins. The school's early care program is offered by a CBO. Can Title I STH funds be used to pay for this early care program?

- A. Yes
- B. No
- C. Not sure



# Challenges With Title I STH Funds

What are some of the challenges that you face with supporting students with Title I STH funds?



Please  
respond in the  
chat. 😊



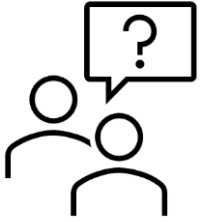
**NYSTEACHS.org**

The New York State Technical and Educational  
Assistance Center for Homeless Students



**MEASUREMENT**  
INCORPORATED

# Reflection... Identifying Areas of Success and Challenge



**Each Spring**, take time to meet with your key stakeholders and **reflect on the current year** before planning for the next. **Ask yourself...**

LOGISTICAL QUESTIONS	IMPACT QUESTIONS
<ul style="list-style-type: none"><li>• What did we purchase that we ran out of?</li><li>• What were the most common "emergency" or "one-off" requests?</li><li>• Which services were used most by students in temporary housing?</li></ul>	<ul style="list-style-type: none"><li>• Did we meet the needs of students in temporary housing that were identified?</li><li>• If services/commodities aimed to improve attendance, did attendance improve for students in temporary housing?</li><li>• If services/commodities were focused on improving the well-being/mental, did the mental health of students in temporary housing improve?</li><li>• If services/commodities were focused on improving academic performance, did academic performance of students in temporary housing improve?</li></ul>



# Summary



Students experiencing homelessness are automatically eligible for Title I STH services. Services must be reasonable and necessary to assist students to take advantage of educational opportunities.



Schools should use data from a variety of sources, including a needs assessment, to determine appropriate spending of Title I STH funds.



Schools should work together with key stakeholders to support students experiencing temporary housing. Include parent involvement activities to create opportunities for parents experiencing temporary housing to engage in their children's education.



**NYSTEACHS.org**

The New York State Technical and Educational  
Assistance Center for Homeless Students



**MEASUREMENT**  
INCORPORATED

# Use of Title I STH Funds

Extracurricular activities

Food Supplies

Transportation

School Supplies

Title I Funds

Fees for educational field trips, graduation

Counseling Services



Uniforms and other clothing

Health Care



NYSTEACHS.org

The New York State Technical and Educational Assistance Center for Homeless Students



MEASUREMENT  
INCORPORATED

# Key Takeaways

What are some key takeaways about Title I STH funds?



**NYSTEACHS.org**

The New York State Technical and Educational Assistance Center for Homeless Students



**MEASUREMENT**  
INCORPORATED



# Resources

More  
Information



[NYCPS Title I STH Funds Toolkit](#)

[NYC Department of Education Title I STH Funds Short Guide:  
Supporting Students in Temporary Housing](#)

[School Allocation Memo No. 11](#)

[Title I STH Funds Infohub Page](#) (requires DOE login)

[NCHE Brief: Serving Students Experiencing Homelessness under  
Title I, Part A](#)



NYSTEACHS.org

The New York State Technical and Educational  
Assistance Center for Homeless Students



MEASUREMENT  
INCORPORATED

# Technical and Educational Assistance Center

- **Help Line** (800-388-2014)
- **Website** (<https://nysteachs.org>)
- **Web-Based Trainings**
- **Outreach Materials**



**NYSTEACHS.org**

The New York State Technical and Educational  
Assistance Center for Homeless Students

<https://www.nysteachs.org/order-brochures/brochures-posters>

## **Next Webinar:**

***Meeting the Needs of Unaccompanied Homeless Youths***

***Thursday, December 7, 2023***

***9:30am – 11:00am***



**NYSTEACHS.org**

The New York State Technical and Educational  
Assistance Center for Homeless Students



**MEASUREMENT**  
INCORPORATED